

CERTIFIED LAND CORNER RECORDATION

E 1/4
 Sec 9
 T. 14 N., R. 65 W

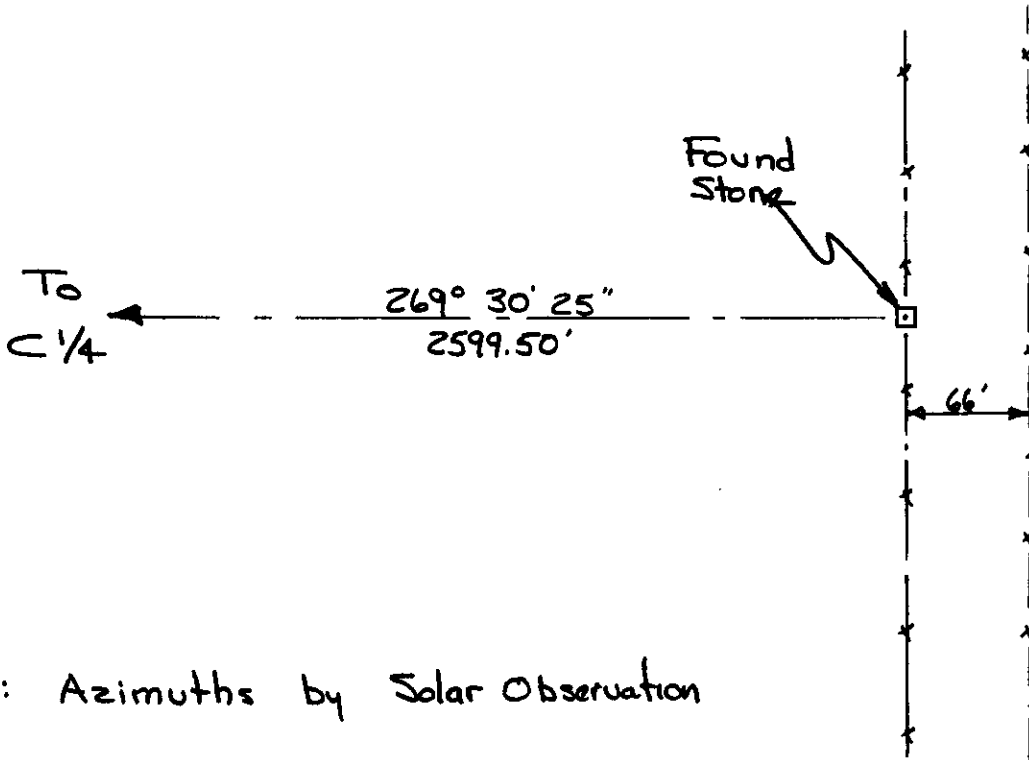
DESCRIPTION OF CORNER EVIDENCE FOUND, AND ORIGINAL RECORD (if known)

Fd Pinkish Granite Stone
 1/4 chiseled on West Face
 'x' chiseled on Top

DESCRIPTION OF MONUMENT AND ACCESSORIES ESTABLISHED
 TO PERPETUATE THE ORIGINAL LOCATION OF THIS CORNER:

None

SKETCH, WITH COURSE AND DISTANCE TO ADJACENT CORNER IF DETERMINED IN THIS SURVEY.
 (May Sketch or Paste Reproduction on Reverse Side.)



NOTE: Azimuths by Solar Observation

I, WILLIAM D. BRAMAN certify that I have carefully performed or reviewed the work done on the diagrammed corner as reported on this recordation form and approve the same.

William D. Braman LS 566
 Signature of Surveyor Registration No.

STATE OF WYOMING,
 Office of Clerk and Recorder,
 County of Saramie

504411

This "corner record" was filed for record on the 23 day of October, 1978, was noted on the cross-index plat and is assigned page No. _____, in book No. _____.

James C. Whithead
 County Official

Cross Index No.	T. _____	R. _____	Mer.
	<u>Q-13</u>	<u>14</u>	<u>65</u> Mer.
	_____	_____	Mer.
	_____	_____	Mer.
	_____	_____	Mer.
	_____	_____	Mer.
	_____	_____	Mer.

501111

Photographed ✓
Indexed ✓
Filed ✓
Assessor _____